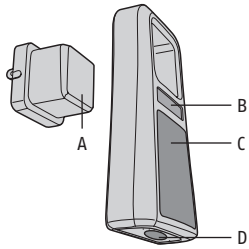


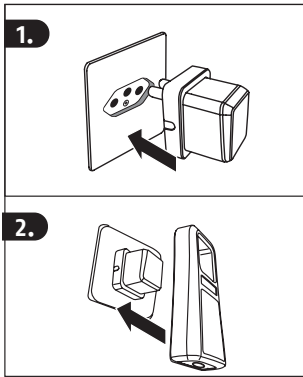


Security Tech Germany

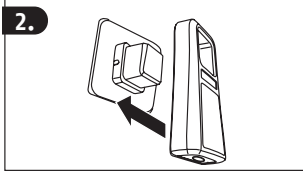
DE



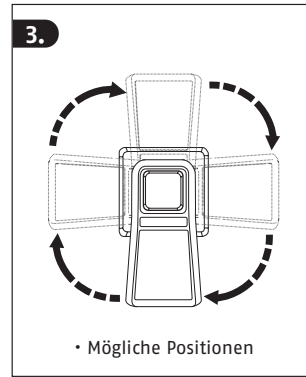
A: Nachtlicht
B: Bewegungssensor
C: Notlicht
D: Taschenlampe für Stromausfall / Notfall



1.



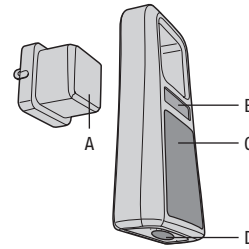
2.



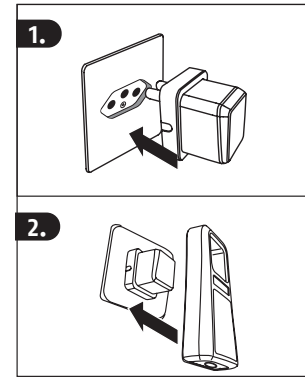
3.

• Mögliche Positionen

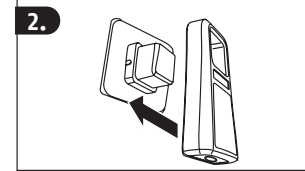
GB



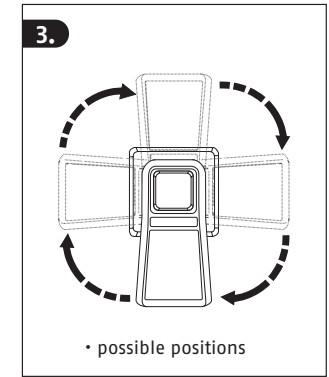
A: Leave-on nightlight
B: Motion detection sensor
C: Hands free emergency light
D: Emergency power failure light / emergency flashlight



1.

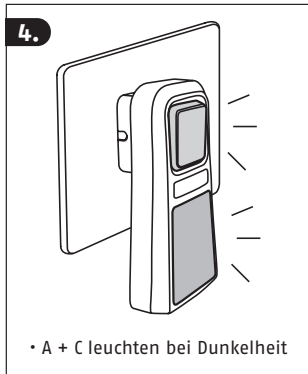


2.



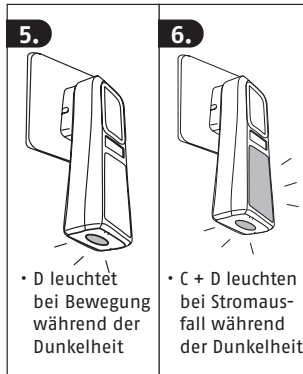
3.

• possible positions



4.

• A + C leuchten bei Dunkelheit

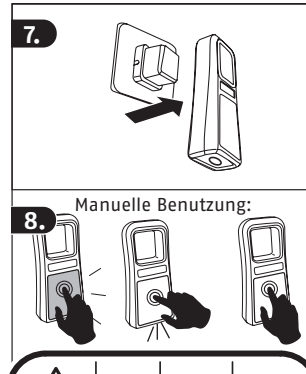


5.

• D leuchtet bei Bewegung während der Dunkelheit

6.

• C + D leuchten bei Stromausfall während der Dunkelheit

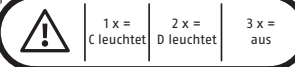


7.

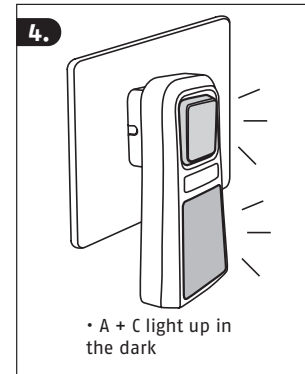
Manuelle Benutzung:



8.

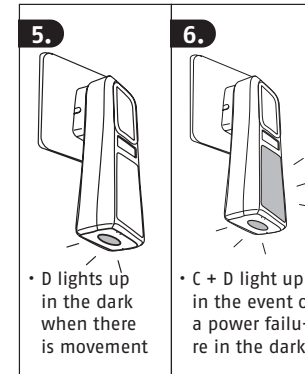


1 x = C leuchtet
2 x = D leuchtet
3 x = aus



4.

• A + C light up in the dark

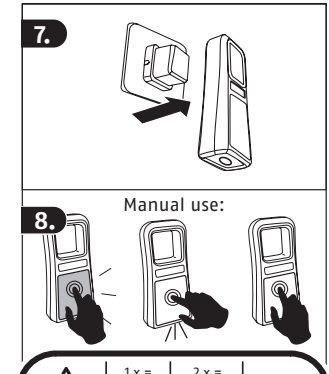


5.

• D lights up in the dark when there is movement

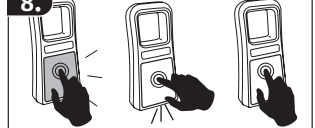
6.

• C + D light up in the event of a power failure in the dark

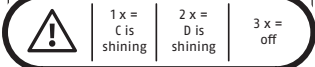


7.

Manual use:



8.



1 x = C is shining
2 x = D is shining
3 x = off

VORSICHT:
Bitte lesen Sie diese Anleitung vor der Montage und Inbetriebnahme sorgfältig durch. Bewahren Sie die Anleitung auf, solange Sie den Artikel in Gebrauch haben und unterweisen Sie jeden Nutzer in die Bedienung.

wenden, an denen das Nachtlicht nicht mit Bettzeug oder anderen Materialien in Kontakt kommen kann. Nicht mit Verlängerungskabeln betreiben. ABUS haftet nicht für Mängel und Schäden, die durch unsachgemäße Bedienung, normalen Verschleiß und Nichtbeachtung dieser Anleitung entstanden sind.

Nur in freien Wandsteckdosen ver-

VORSICHT!
Hinweise zur Montage / Bedienung.

Betrieb: Stromquelle mit 230 V ~, 50 Hz.
Bewegungssensor: max. 5,5 m Entfernung und ca. 120° Blickwinkel.
Automatische Ausschaltung nach 30 Sek. ohne Bewegung.
Aufladezeit: 12 Stunden
Raumtemperatur: 10 - 40° C
2 x 0,5 Watt LED
Farbtemperatur: 6500 Kelvin



©ABUS
August Bremicker Söhne KG
Altenhofer Weg 25
D 58300 Wetter
Tel.: +49 23 35 63 40
www.abus.com
info@abus.de



CAUTION:
Please read this guide carefully before installation and use. Keep these instructions as long as you are using the item and provide all users with instruction on how to use it.
For use by adults only!
Plug only into exposed wall outlets where the device cannot contact bed

covering or other material. Do not use with extension cords. ABUS assumes no liability for defects or damage that has been caused by improper use, normal wear and tear or non-compliance with this operating and installation instructions document.

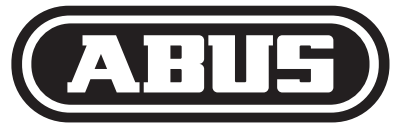
CAUTION!
Further fitting / using details

Operation: power source 230 V ~, 50 Hz.
Motion sensor: max. 5,5 m (9 ft) and detection angle ca. 120°.
Automatic shut off ca. 30 seconds when no motion detected.
Charging time: 12 Hours.
Room temperature: 10 - 40° C
2 x 0.5 Watt LED
Colour temperature: 6500 Kelvin



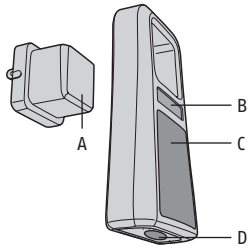
©ABUS
August Bremicker Söhne KG
Altenhofer Weg 25
D 58300 Wetter
Tel.: +49 23 35 63 40
www.abus.com
info@abus.de



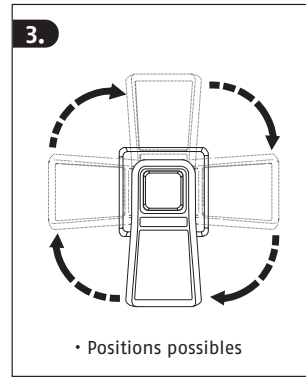
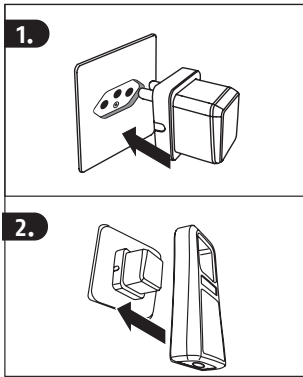


Security Tech Germany

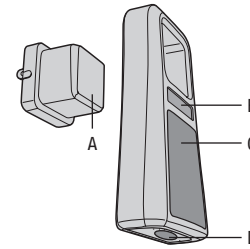
FR



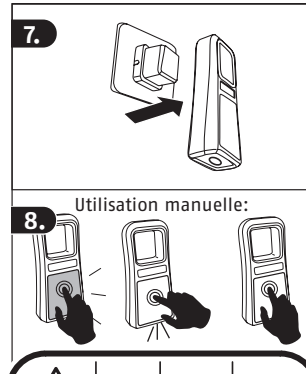
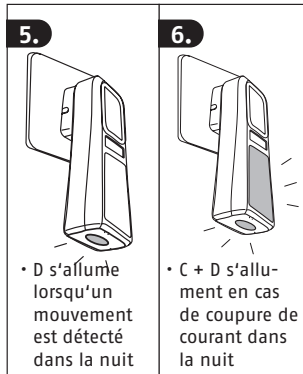
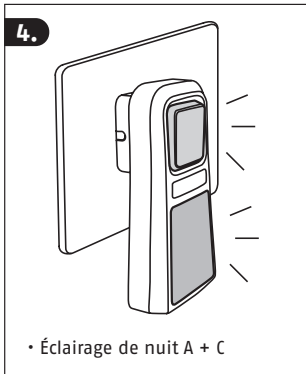
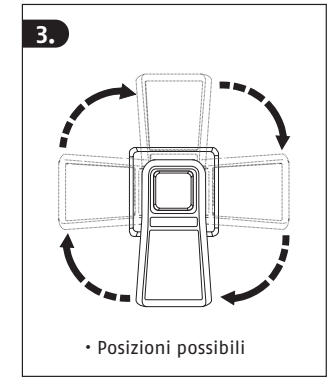
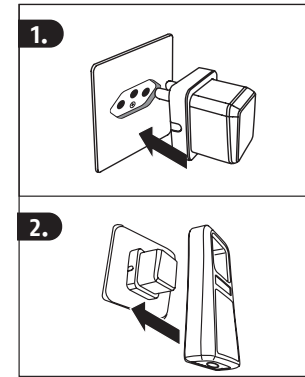
- A: Lumière de nuit
- B: Capteur de détection de mouvement
- C: Lumière d'urgence
- D: Lampe de poche pour panne de courant / urgence



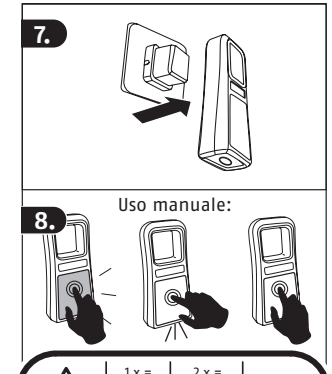
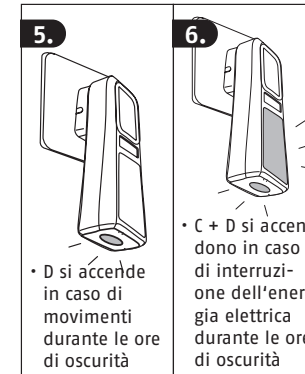
IT



- A: Luce notturna
- B: Sensore di rilevamento del movimento
- C: Luce di emergenza
- D: Torcia elettrica per interruzione di corrente / emergenza



!	1 x = C allumé	2 x = D allumé	3 x = éteint
---	-------------------	-------------------	-----------------



!	1 x = C si accende	2 x = D si accende	3 x = si spegne
---	-----------------------	-----------------------	--------------------

ATTENTION: Veuillez lire cette notice attentive-ment avant le montage et la mise en service. Conservez cette notice tant que vous utilisez l'article. Tous les utilisateurs doivent en prendre connaissance.
Utilisation exclusivement réservée aux adultes !

À n'utiliser que dans des prises murales où l'éclairage de nuit ne peut pas entrer en contact avec la literie ou d'autres matériaux. Ne pas faire fonctionner avec une rallonge. ABUS décline toute responsabilité pour des vices et dommages résultant d'une utilisation incorrecte, de l'usure normale ou de la non-observation des présentes instructions.

Utilisation exclusivement réservée aux adultes ! Cet appareil est uniquement conçu pour l'usage dans des locaux fermés.



®ABUS
August Bremicker Söhne KG
Altenhofer Weg 25
D 58300 Wetter
Tel.: +49 23 35 63 40
www.abus.com
info@abus.de

ATTENZIONE: Si raccomanda di leggere con attenzione le istruzioni prima di eseguire il montaggio e la messa in servizio. Conservare le istruzioni per tutto il tempo in cui il prodotto sarà utilizzato e istruire ogni utente sulle modalità di funzionamento.

Inserire solo in prese a muro libere, dove la luce notturna non possa venire a contatto con lenzuola o altri materiali. Non utilizzare con cavi di prolunga. ABUS non è responsabile per difetti o danni causati da un utilizzo non appropriato, dal normale logoramento o dalle mancata osservanza delle presenti istruzioni.

Per uso solo da persone adulte!

ATTENZIONE!
Note per l'installazione / uso

Funzionamento: Sorgente di aliment. da 230 V ~, 50 Hz. Rilevatore di movimento: max. 5,5 m di distanza e un angolo di rilevamento di circa 120°. Spegnimento automatico dopo 30 sec. in assenza di movimento. Tempo di ricarica: 12 ore. Temperatura ambiente: 10 - 40°C. LED: 2 x 0,5 Watt. Temperatura di colore: 6500 Kelvin



®ABUS
August Bremicker Söhne KG
Altenhofer Weg 25
D 58300 Wetter
Tel.: +49 23 35 63 40
www.abus.com
info@abus.de

ATTENTION !
Instructions de montage / utilisation

Fonctionnement : Source d'aliment. de 230 V ~, 50 Hz. Détecteur de mouvement : distance max. de 5,5 m et angle de vision d'environ 120°. Arrêt automatique après 30 secondes sans mouvement. Temps de charge : 12 heures. Température ambiante : 10 - 40° C. 2 x LED 0,5 watt. Température de couleur : 6500 kelvin

Nous nous réservons le droit de toutes modifications techniques. Nous n'assumons aucune responsabilité pour des erreurs ou défauts d'impression éventuels.
®ABUS | D 58292 Wetter | Germany



Si si riservano modifiche tecniche. Per errori e refusi di stampa non ci si assume alcuna responsabilità. ®ABUS | D 58292 Wetter | Germany

